



# CWEA

June 2021

# SEWER LEAKS

## A PUBLICATION OF THE LOS ANGELES BASIN SECTION OF CWEA

### BOARD MEMBERS

#### PRESIDENT

Jennifer Thompson

#### VICE PRESIDENT

Jenny Tanphanich

#### DIRECTOR-SECRETARY

Brook Yared

#### DIRECTOR-TREASURER

Vacant

#### DIRECTOR-AT-LARGE

Rachel Deco

Dong Liu

Lane Pagano

#### DIRECTOR-CORPORATE

Cody Duncan

#### PAST PRESIDENT

Chris DeMonbrun

### COMMITTEE MEMBERS

#### CWEA LIASON

Brian Villacorta

#### P3S COMMITTEE CHAIR

John Boyd

#### SYP COMMITTEE CHAIR

Alex Cerano

#### OUTREACH COORDINATOR

Erika Bensch

#### LEADERSHIP AND DEVELOPMENT

Dan Gary

#### NEWSLETTER

Sophia Luu

#### PROGRAMS

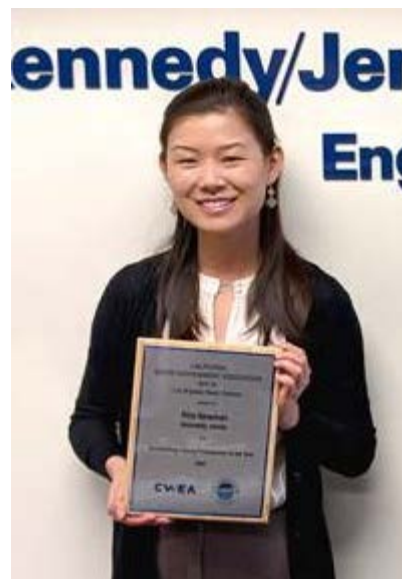
John Robinson

#### WEBSITE

Hedieh Esfahani

## LABS 2020-2021 Award Winners

Rita Newman, PE, was selected as the winner of the 2020-2021 Los Angeles Basin Section (LABS) of CWEA (California Water Environment Association) Outstanding Young Professional of the Year Award. LABS is a local chapter of CWEA, which is a Member Association of Water Environment Federation (WEF) and receives nominations for awards throughout the year. For the last three consecutive years, Rita has presented at WEFTEC conferences and became active in LABS in 2019 through her work as the Water For People Los Angeles Committee Lead. Congratulations, Rita!



Crescenta Valley Water District (CVWD) was selected as the winner of the 2020-2021 LABS of CWEA Collection System Small (0 to 249 Miles) Award. CVWD operates a wastewater collection in a steep region located in the foothills of the San Gabriel Mountains. The soils in the area tend to be rocky with a mixture of sands and silts, and slopes can sometimes become quite steep with an overall elevation difference of about 2000 feet within CVWD's wastewater service area. This provides for a unique and challenging experience in operations and maintenance of our approximately 75 miles of sewer main. The District serves roughly 6,300 wastewater customers. A majority are single family residences with a small portion multi-family residences and general commercial facilities. Congratulations, CVWD!

Stay tuned to for remaining 2020-2021 Award Winners in future newsletters!



JOIN US ONLINE!

<http://labsforcwea.com/>

## Black & Veatch's Jennifer Thompson Elected President for a 2nd Term

The year 2020 was a rough year but Jennifer Thompson, PE with strong leadership and communication with her Board and membership helped LABS get through the year. Jennifer helped establish a first for LABS with virtual lunchtime presentations, coordinated 2020 Annual Award winners and helped grow LABS to be one of the largest CWEA Chapters in California. Jennifer was selected for a 2nd Term as President for the 2021-2022 to lead Los Angeles Basin Section (LABS) of CWEA (California Water Environment Association) through another year. This is the first time in LABS of CWEA history that a President has served consecutive Presidencies since founded in 1953. Jennifer graduated Cal Poly San Luis Obispo and over the last eight year has been working for Black & Veatch with water and wastewater clients.



Congratulations, Jennifer!

## LA Environment and Sanitation's Chris DeMonbrun our Past-President for a 2nd Term

In this past pandemic year, Chris DeMonbrun continued our mission statement to enhance the education and effectiveness of California's Wastewater Professionals through training, certification, and dissemination of technical information, to promote sound policies to benefit society through protection and enhancement of the water environment, and to further the mission, aims, and objectives of the Association. Chris worked with the CWEA LABS Board of Directors to recruit new Board members, assisted with the Virtual presentations and let the effort to complete and distribute our 2020 Award winners.



Thank you Chris for your effort on the LABS Board!

## UPCOMING EVENTS

06/24/2021

LABS Virtual Presentation  
Tapia Water Reclamation Facility  
Process Air Improvements

07/13/2021

Virtual Tools for Real-World  
Decision Making

07/29/2021

Under Pressure: California's Water  
Challenges Along the Border

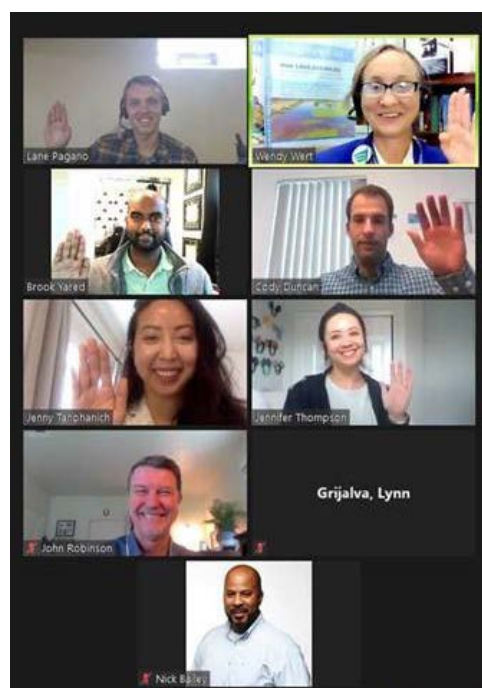
08/03/2021

WEF-AWWA Young Professionals  
Summit

08/09/2021 - 08/12/2021

35<sup>th</sup> Annual Tri-State  
Seminar & Exhibition

## Congratulations to our new board members initiated in May 2021!





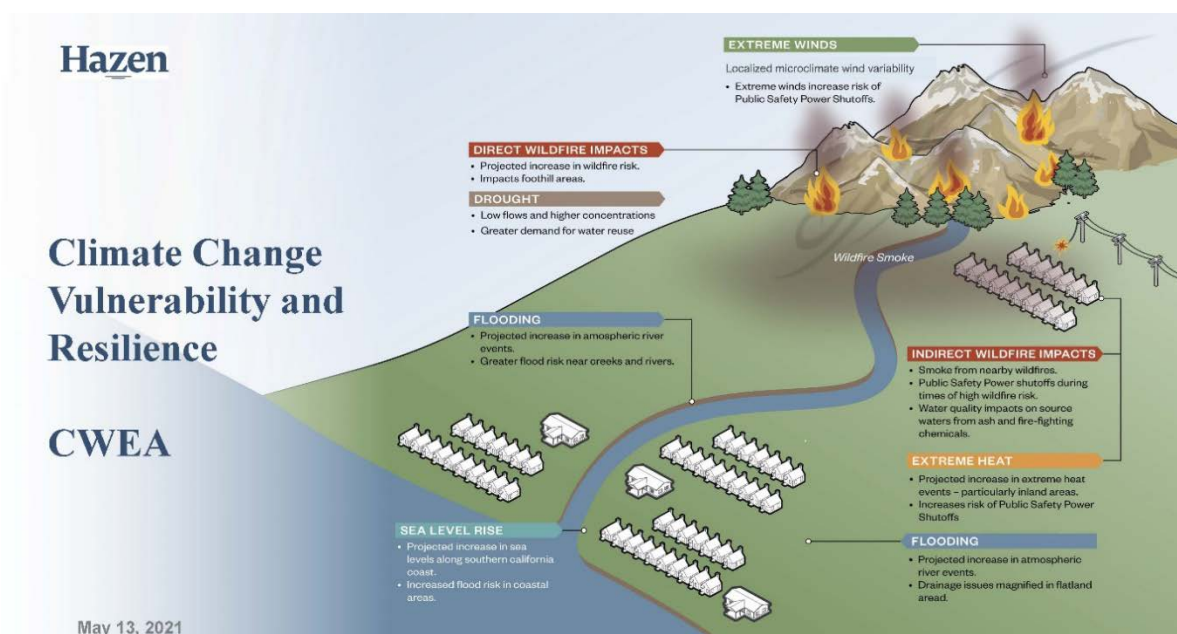
# CLIMATE CHANGE VULNERABILITY AND RESILIENCE

Article by John Robinson

LABS hosted our 4th virtual presentation to learn how wastewater systems may be vulnerable to Climate Change and how facilities can become more resilient with the following recommendations:

1. Identifying areas that will be impacted by climate change stressors such as more frequent wildfires, more intense storms, greater heat waves, more variable winds, rising sea level and extended droughts
2. Understanding how sewers, pump stations and treatment facilities operate under extreme events now – and what else will be needed for the future
3. Recognize that some communities will be more vulnerable to certain stressors, and that the mitigation measures must be tailored to protect the public health and environment for all communities in the service area
4. Utility staff and their specialized consultants can arrive at a set of mitigation measures – emergency action plans, monitoring and coordination, design guidelines, retrofits, changes to planned capital improvement projects and new projects to prepare for changes in our climate

The virtual presentation was conducted by our guest speaker Ms. Lynn Grijalva, P.E. a Civil Engineer and Vice President with Hazen and Sawyer. Ms. Grijalva is a project director and manager of major water infrastructure projects that focus on resilience, including several Climate Change Resilience Plans for wastewater utilities. She has 41 years of experience in water and wastewater in the western United States and is a past president of the Water Environment Federation.



## Some Key Messages From Latest California Fourth Assessment

That apply to wastewater infrastructure

Climate Impact	Historical Trend	Future Direction of Change	Confidence for Future Change
Sea Levels	Rising (last 100+ years)	Rising ↑	Very High ●
Snowpack	Declining (last 100+ years)	Declining ↓	Very High ●
Temperature	Warming (last 100+ years)	Warming ↑	Very High ●
Intensity of heavy precipitation events	No significant trends in data (last 100+ years)	Increasing ↑	Medium-High ●
Acres Burned by Wildfire	Increasing (last 30+ years)	Increasing ↑	Medium-High ●



# 2021 LABS Sponsors

For information on becoming a  
sponsor of LABS, contact:  
Cody Duncan: [cjduncan719@gmail.com](mailto:cjduncan719@gmail.com)



**John Robinson Consulting, Inc.**  
*A certified SBE*

**John Robinson, Principal**  
1055 East Colorado Blvd., Suite 500  
Pasadena, CA 91106  
(626) 375-9389 cell  
[jrobinson@johnrobinsonconsulting.com](mailto:jrobinson@johnrobinsonconsulting.com)

[www.johnrobinsonconsulting.com](http://www.johnrobinsonconsulting.com)



**Catherine Jones**  
VP – Inside Sales Associate

4452 Ocean View Blvd.  
Suite 200  
Montrose, CA 91020

Office 818.330.7425  
Cell 661.645.4871  
[Catherine@FlowNControl.com](mailto:Catherine@FlowNControl.com)  
[www.flowcontrol.com](http://www.flowcontrol.com)



**AMIR SOLTANIEH**  
PRESIDENT, PRINCIPAL

140 S. CHAPARRAL CT., SUITE 140 (714) 202-8101  
ANAHEIM HILLS, CA 92808 FAX (714) 627-4936  
CELL (949) 266-7640 [amirs@flo-systems.net](mailto:amirs@flo-systems.net)



*The process and water quality specialists*  
[www.trusselltech.com](http://www.trusselltech.com)

**Bryan Trussell, P.E.**  
232 N Lake Ave, Suite 300  
Pasadena CA 91101  
Tel (626) 486-0560 x 117  
[bryan.trussell@trusselltech.com](mailto:bryan.trussell@trusselltech.com)



**Kris Brooks**  
155 Balboa Street, Suite D-9  
San Marcos, CA 92069  
Phone: 760-510-8030  
[info@marcabcoinc.com](mailto:info@marcabcoinc.com)



**Hazen and Sawyer**

**Dave Jones**  
1149 Hill Street, Suite 450  
Los Angeles, CA 90015  
Office: 213-234-1090  
[drjones@hazenandsawyer.com](mailto:drjones@hazenandsawyer.com)



**BLACK & VEATCH**

[www.bv.com](http://www.bv.com)

**Jennifer Thompson, P.E.**  
800 Wilshire Blvd. Suite 600  
Los Angeles, CA 90017  
Phone: 213-312-3314  
Fax: 213-312-3399  
[ThompsonJA@bv.com](mailto:ThompsonJA@bv.com)



Experts in the Rehabilitation of Sewer Pipelines,  
Structures and Industrial-Related Infrastructure.

*Why Dig and Replace Pipe when you can Reline It for Less?*

(714) 891-2323 [www.sancon.com](http://www.sancon.com)

5841 Engineer Dr. Huntington Beach, CA 92649



**MULTI W SYSTEMS, INC.** **Wen Wang,** President  
**William Wang,** Vice President

Phone: 626-401-2627  
Fax: 626-442-0839  
[www.multiwsystems.com](http://www.multiwsystems.com)

2615 Strozier Avenue  
El Monte, CA 91733  
Email: [info@multiwsystems.com](mailto:info@multiwsystems.com)

Pumps • Electrical Motors • Generators • Control Panels  
Sales • Service and Engineering



**Woodard & Curran**

**David Haug**  
888 South Figueroa Street, Suite 1700  
Los Angeles, CA 90017  
Office: 213-223-9465  
[dhaug@woodardcurran.com](mailto:dhaug@woodardcurran.com)



ISSUE 1  
2021

36TH ANNUAL  
**TRI-STATE SEMINAR**

AUGUST 9-12, 2021 | SOUTH POINT HOTEL & CASINO | LAS VEGAS, NV

**TRI-STATE  
SEMINAR  
IS BACK**



CWEA

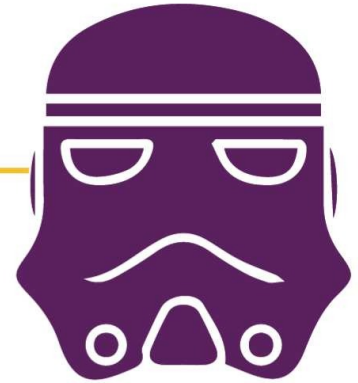
AZ  
Water  
ASSOCIATION

[WWW.TRISTATESEMINAR.COM](http://WWW.TRISTATESEMINAR.COM)

ADDRESS SERVICE REQUESTED: P. O. BOX 11220 TUCSON, AZ 85734-1220



## SCHEDULE AT A GLANCE



### SUNDAY, AUGUST 8, 2021

BY APPOINTMENT Rolling Stock, Exhibitor Setup

### MONDAY, AUGUST 9, 2021

7:30am – 2:50pm MS4 CCEI Certification  
 7:30am – 3:50pm Math Made Easy  
 7:30am – 3:50pm NASSCO PACP Recertification  
 12:00pm – 6:00pm Exhibitor Setup  
 2:00pm – 8:00pm Attendee Registration  
 7:00pm – 10:00pm Networking Session by the Pool

### TUESDAY, AUGUST 10, 2021

6:00am – 1:30pm Golf Tournament  
 Revere Golf Club, 2600 Hampton Road  
 6:30am – 4:30pm Attendee Registration  
 7:30am – 3:50pm Technical Sessions  
 7:30am – 3:50pm NASSCO PACP Certification (Day 1 of 2)  
 8:00am – 1:00pm Exhibitor Setup  
 3:30pm – 7:00pm Exhibits Open

### WEDNESDAY, AUGUST 11, 2021

7:00am – 4:30pm Attendee Registration  
 7:30am – 3:50pm Technical Sessions  
 7:30am – 11:30am MS4 CCEI Re-Certification  
 7:30am – 3:50pm NASSCO PACP Certification (Day 2 of 2)  
 3:30pm – 6:30pm Exhibits Open  
 6:30pm – 10:00pm Exhibitor Tear-Down/Move Out

### THURSDAY, AUGUST 12, 2021

7:00am – 12:00pm Attendee Registration  
 7:30am – 3:50pm Technical Sessions  
 7:30am – 11:30am NASSCO MACP Certification/Re-Certification  
 1:00pm – 3:50pm NASSCO LACP Certification/Re-Certification  
 1:00pm – 1:50pm Nevada Water and Wastewater Operators Update  
 6:30pm – 10:00pm Volunteer & Awards Banquet



INDUSTRIAL  
CENTRIFUGE  
SPECIALISTS

*"CentriTEK specializes in the service and repair of all brands of decanter centrifuges"*



**BRANDS SUPPORTED** Alfa Laval-Sharples, Andritz-Bird, Centrisys, Flottweg, Hiller-Siemens-US Filter & Westfalia

#### SERVICES

- onsite service, training and optimization
- complete shop rebuilds including wear surface replacement,
- bowl & scroll dynamic balancing
- gearbox and hydraulic scroll backdrive service
- new control & hydraulic back drive retrofits

**CENTRIFUGE DEWATERING SYSTEM RENTALS & SALES**

209-304-2200 sales@centritek.com www.centritek.com



## 2021 REGISTRATION COSTS

Registration is reduced for both AWWA/WEF members and students. Not a member? Join AWWA or WEF and save now! Refer to the registration information online now.

2021 YP SUMMIT REGISTRATION	MEMBER RATE	NONMEMBER RATE	STUDENT MEMBER RATE	STUDENT NONMEMBER RATE
	\$75	\$110	\$35	\$45

## EXPENSES WORKSHEET

Use the worksheet below to develop a cost estimate for attending the YP Summit.

EXPENSE	COST
Summit Registration	\$ 35–110
Lodging	ZERO
Mileage Reimbursement	ZERO
Flight	ZERO
Transportation (Airport to Hotel)	ZERO
Transportation (Hotel to Airport)	ZERO
Parking Reimbursement	ZERO
Food Per Diem	ZERO
Total Cost:	\$ 35–110





## BENEFITS WORKSHEET

Powerful networking opportunities: people that can save us money	UTILITY CONTACTS: I will find other utilities facing the same problems we face and will develop contacts who can share their knowledge of cost-effective solutions. I can learn from their mistakes and benefit from their success.
	VENDOR CONTACTS: I will meet vendors who know our processes and how they can be cost-effectively improved, including new technologies that can save us money in the long term.
	SUPPORT CONTACTS: Government officials and engineers that know which technologies qualify for grant funding and how to obtain it.
	REGULATORY CONTACTS: Agency reps that can help us clarify and understand our regulatory requirements so that we remain current on compliance issues.
Find solutions to our current problems (regulatory issues, equipment issues, management issues, customer service issues, process issues, etc.)	Issue 1:
	Issue 2:
	Issue 3:
	Issue 4:
Find ways to do more with what we already have	I will meet vendors and operators that know our processes well and can give us insights into how we can deliver better performance, using equipment we currently use, but at a lower cost.
Find new technologies we should be studying now	I will see where the industry is heading and which innovations are making it much more cost-effective to operate our processes.
Cross-training—provide opportunities for others to learn my job and take on more responsibility	I plan to have _____ cover my duties
	While I am away, I will have this person ready to assume these duties before my departure, will meet with them for a debrief upon my return and will provide counselling/feedback/coaching for this person with written reports for supervisor's use and for their personnel file.
Staff presentations to "Share the Information" gained from the YP Summit	SUPERVISOR'S REPORT: I will prepare and submit a written report to my manager of my findings and of the short term and long-term action items that result from what I learn at the YP SUMMIT.
	STAFF BRIEFINGS: I will prepare and deliver a staff briefing of my findings so that others may benefit from what I learn at the YP SUMMIT.
	TRAINING ASSISTANCE: I will help others learn how to effectively attend a major summit, like the YP Summit, and deliver the maximum benefit to the Utility upon their return.

