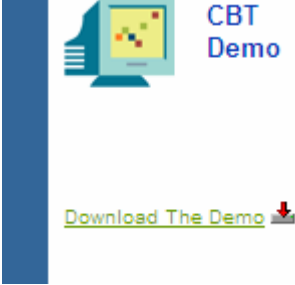
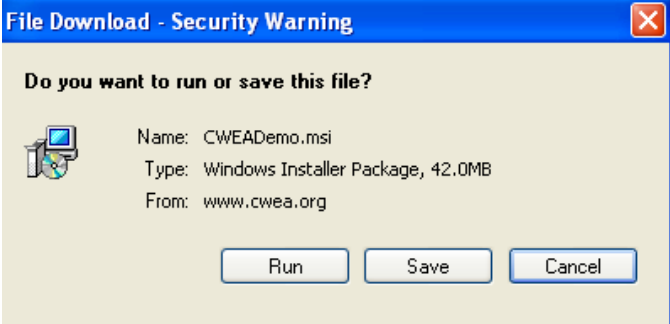
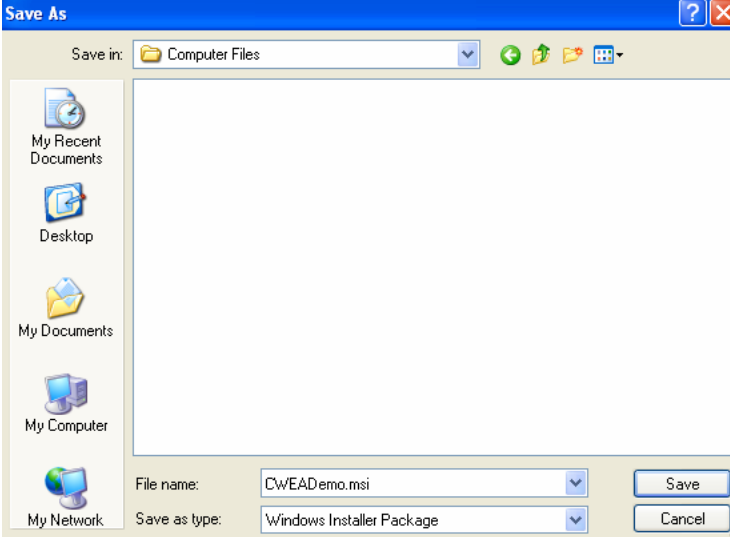
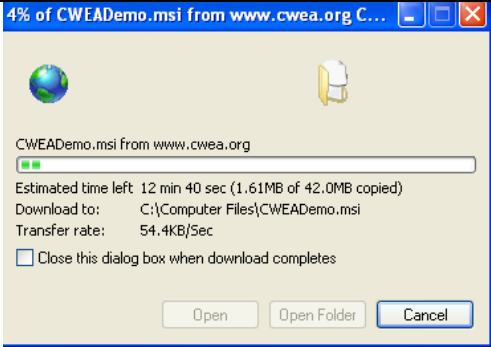
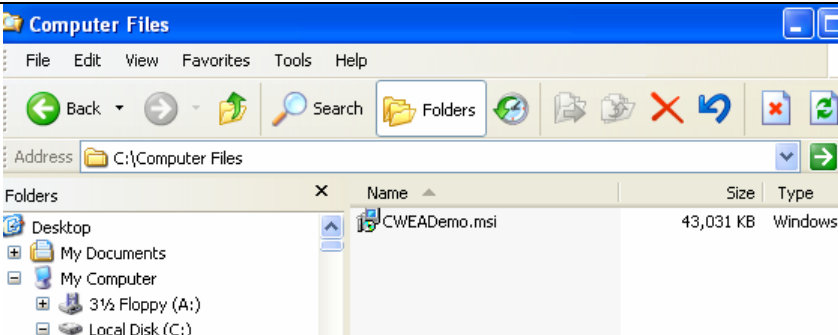


1.	Go to www.cwea.org/cbt , and then click on the "Download Demo" link.	 <p>The screenshot shows a webpage titled "CBT Demo". On the left is a blue vertical bar. To the right is a computer monitor icon with a colorful screen. Below the monitor is a green link that says "Download The Demo" with a red download arrow icon next to it.</p>
2.	Click the Save button	 <p>The screenshot shows a Windows dialog box titled "File Download - Security Warning". The main text asks "Do you want to run or save this file?". Below this, there is a small icon of a computer with a download arrow. To the right of the icon, the following information is displayed: "Name: CWEADemo.msi", "Type: Windows Installer Package, 42.0MB", and "From: www.cwea.org". At the bottom of the dialog are three buttons: "Run", "Save", and "Cancel".</p>
3.	Save the CWEADemo.msi file to a folder on your computer	 <p>The screenshot shows a "Save As" dialog box. The "Save in:" field is set to "Computer Files". On the left side, there is a list of folders: "My Recent Documents", "Desktop", "My Documents", "My Computer", and "My Network". The "File name:" field contains "CWEADemo.msi" and the "Save as type:" field is set to "Windows Installer Package". At the bottom right, there are "Save" and "Cancel" buttons.</p>

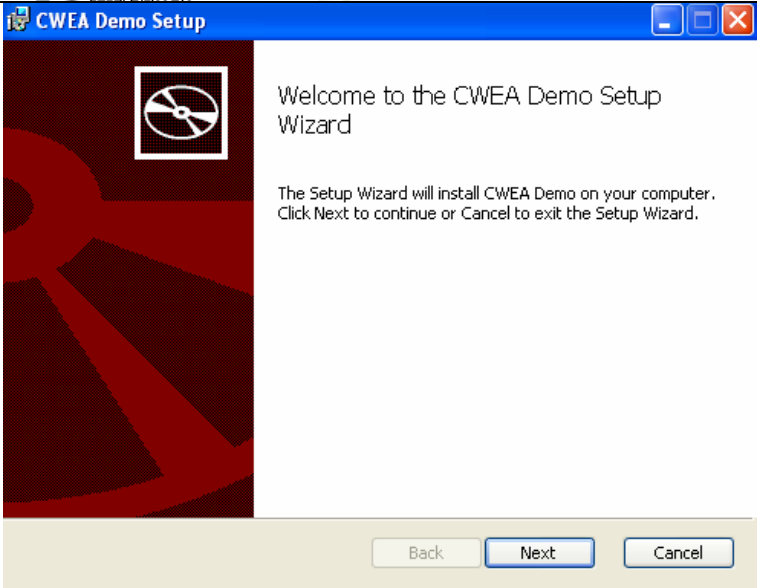
4. A window like this will appear while the demo file is downloading. It is 43 megabytes, so it might take a few minutes depending on your internet connection.



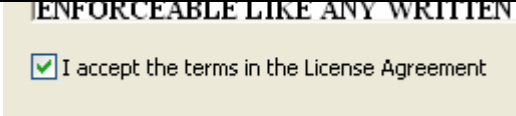
5. Once the file has downloaded, use your Windows Explorer to browse to the file and then double click on the CWEADemo.msi file to start the installation process.

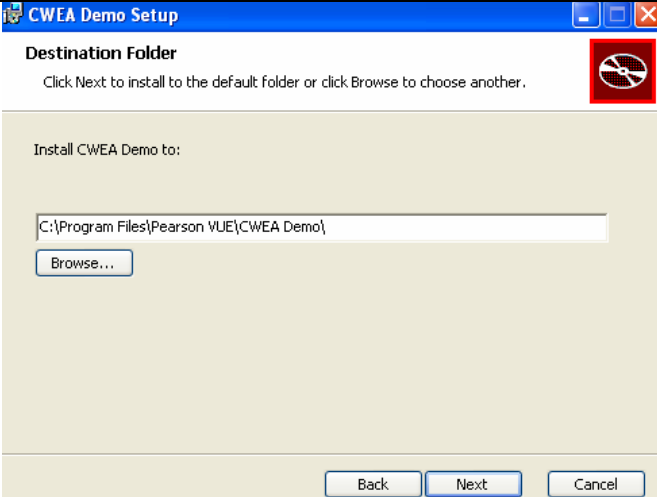
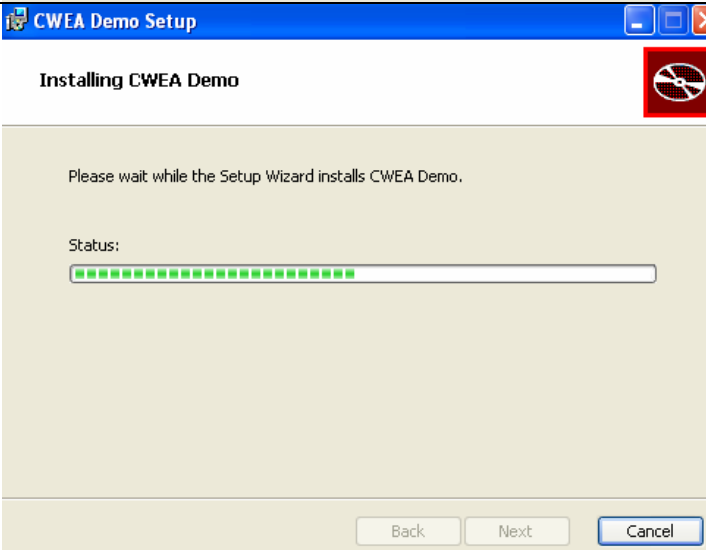
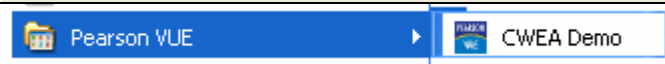


6. Once the set-up starts, click Next.



7. Check the box that says "I accept the terms in the License Agreement."



8.	You can select the default folder to install the demo, or browse to another folder. Click Next.	 <p>The screenshot shows the 'CWEA Demo Setup' window with the 'Destination Folder' section. It prompts the user to click 'Next' to install to the default folder or 'Browse' to choose another. The text 'Install CWEA Demo to:' is followed by a text box containing the path 'C:\Program Files\Pearson VUE\CWEA Demo\'. Below the text box is a 'Browse...' button. At the bottom of the window are 'Back', 'Next', and 'Cancel' buttons.</p>
9.	The demo will begin to install.	 <p>The screenshot shows the 'CWEA Demo Setup' window with the 'Installing CWEA Demo' section. It displays the message 'Please wait while the Setup Wizard installs CWEA Demo.' Below this is a 'Status:' label and a progress bar consisting of 15 green segments. At the bottom of the window are 'Back', 'Next', and 'Cancel' buttons.</p>
10.	Once installed click on Start, Programs, and you will see the Pearson VUE folder containing the CWEA Demo. Click on CWEA Demo to begin the demo.	 <p>The screenshot shows the Start menu with the 'Pearson VUE' folder expanded. The 'CWEA Demo' application icon is visible within the folder.</p>

11. Now the demo has begun. Follow the instructions on the screen. To exit click on the Exit icon. To start the test demo, click on the button right above "Standard Exam."

PEARSON VUE DEMO

Technology induced assesments & knowledge validation



Standard Exam

